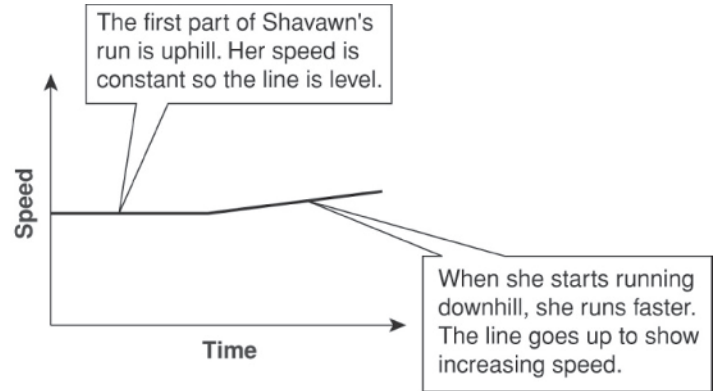


**LESSON**  
**6-4**

# Analyzing Graphs

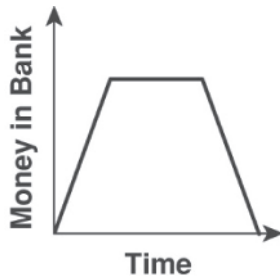
## Reteach

Graphs are often used to model situations. This graph shows Shavawn's daily jogging routine. She jogs uphill at a steady speed. When she starts to run downhill, her speed increases.



You have a savings account in a bank. The graphs below show how the amount in your account changes. Describe what each graph shows.

1.

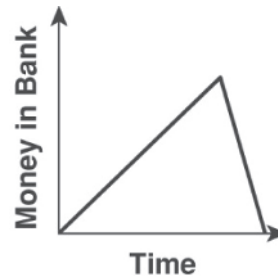


\_\_\_\_\_

\_\_\_\_\_

\_\_\_\_\_

2.



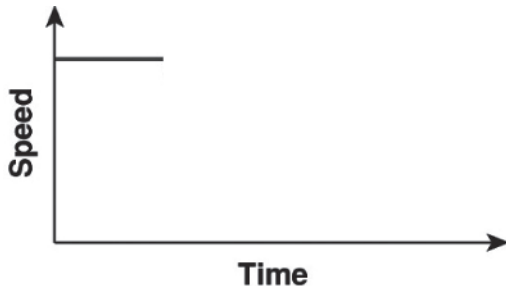
\_\_\_\_\_

\_\_\_\_\_

\_\_\_\_\_

Complete the graph for each situation.

3. Mr. Wyatt drives for a while at a steady speed. A traffic jam slows him down. Then he resumes his normal speed.



4. You are watching television. You turn down the volume during a commercial. You turn the volume back up after the commercial.

